

Fluke VT06 & VT08 Visual IR Thermometer

New Palm-size Device, Light & Clear



Higher resolution, greatly improving temperature measurement efficiency

The 120 x 90 resolution model has more than 10000 infrared pixels, which is 12 times higher than the previous generation* and rich temperature details help you find problems faster.

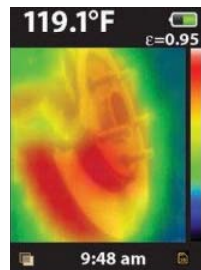


Image from the previous generation product VT04* (28x28 pixel)

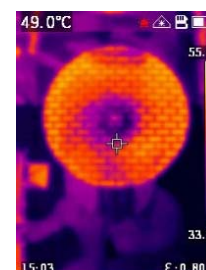


Image from VT08 (120x90 pixel)

Difficult to distinguish between false and real? Infrared and visible blending can help!

VT08 is equipped with both infrared and visible light cameras and blend a visual image with infrared heat map overlay in real-time to distinguish the object. In addition, your customers can quickly adjust the blend degree according to their requirements, or switch to the Picture-in-Picture mode.



Advanced functionality in the size of a spot thermometer

Portability is one of the advantages of VT06 / VT08 thermal Thermometer. It is almost comparable to the point thermometer in terms of weight and size. Great abilities with a small size, you can get a leap in temperature measurement experience from point to area.



Features & Benefits

FLUKE®

Fluke VT06 Visual Thermometer	Fluke VT08 Visual Thermometer
120 x 90 pixel resolution	120 x 90 pixel resolution
Up to 400 °C measurement temp	Up to 400 °C measurement temp
Laser pointer	Visual light camera (PIP mode)
8 hrs battery life	Laser pointer
	5 hrs battery life
	Flashlight



Part No.	Description
FLUVT06	Visual IR Thermometer, -10 to 400°C
FLUVT08	Visual IR Thermometer, PIP, -10 to 400°C

☎ 1300 555 586
 🌐 repelec.com.au

rep ELEC
 TRADE SOLUTIONS

📘 📷
 🐦 📺 @RepelecAU