

Fluke VT06 & VT08 Visual IR Thermometer

New Palm-size Device, Light & Clear



Higher resolution, greatly improving temperature measurement efficiency

The 120 x 90 resolution model has more than 10000 infrared pixels, which is 12 times higher than the previous generation* and rich temperature details help you find problems faster.

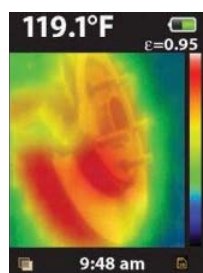


Image from the previous generation product VT04* (28×28 pixel)

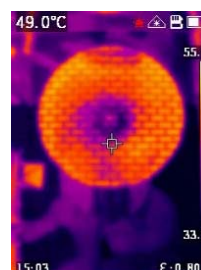


Image from VT08 (120×90 pixel)

Difficult to distinguish between false and real? Infrared and visible blending can help!

VT08 is equipped with both infrared and visible light cameras and blend a visual image with infrared heat map overlay in real-time to distinguish the object. In addition, your customers can quickly adjust the blend degree according to their requirements, or switch to the Picture-in-Picture mode.



Advanced functionality in the size of a spot thermometer

Portability is one of the advantages of VT06 / VT08 thermal Thermometer. It is almost comparable to the point thermometer in terms of weight and size. Great abilities with a small size, you can get a leap in temperature measurement experience from point to area.



Features & Benefits

FLUKE®

| Fluke VT06 Visual Thermometer | Fluke VT08 Visual Thermometer |
|-------------------------------|--------------------------------|
| 120 x 90 pixel resolution | 120 x 90 pixel resolution |
| Up to 400 °C measurement temp | Up to 400 °C measurement temp |
| Laser pointer | Visual light camera (PIP mode) |
| 8 hrs battery life | Laser pointer |
| | 5 hrs battery life |
| | Flashlight |



| Part No. | Description |
|----------|--|
| FLUVT06 | Visual IR Thermometer, -10 to 400°C |
| FLUVT08 | Visual IR Thermometer, PIP, -10 to 400°C |

1300 555 586
repelec.com.au

rep ELEC
 TRADE SOLUTIONS

@RepelecAU