

NEW

FLUKE®

The Fluke iSee™ Mobile Thermal Camera TC01A/TC01B

With the Fluke iSee™ Mobile Thermal Camera, temperature can be measured and thermal imaging detection can be carried out anytime and anywhere by conveniently inserting it into the Type C or Lightning interface of a smartphone. It can be widely used in electrical and mechanical inspections, inspection service, HVAC inspection, product R&D and quality control, greatly improving the inspection efficiency.

Detailed image quality comparable to professional thermal cameras

- 256 x 192 pixels, detailed image quality
- Up to 550°C, suitable to use in many applications
- 50 mk (0.05 °C) thermal sensitivity for fine differences
- ±2% or ±2 °C accuracy to ensure reliable results
- 25 Hz frame rate for smooth video recording
- Customise image view with more than 10 standard or custom colour palettes

Powerful full temperature range analysis

- Powerful full temperature range analysis
- Never miss any detail with real-time high and low temperature capture
- Adjustable emissivity to apply with different materials
- Comprehensive temperature analysis for spot, line and area, supported with professional thermal imaging app
- Real-time temperature alarm for timely response of abnormal condition
- Automatic time-lapse capture mode, for unattended operation
- Infrared and visible image comparison for locating, comparing and archiving

Real-time image sharing for fast and easy communication

- Easy image and video management through real-time communication
- Easy to add image annotation for smooth communication

Small and portable, takes only a second to get started

- Compact design as light as 22 g
- The iSee™ is made of high quality specially treated aluminum material with laser etched surface
- Durable. Up to 1 meter drop test, IP54 ingress protection
- Optimised Fluke iSee™ application interfaces and menus, to enhance user experience with easy to access functions

Suitable for various models, more reliable

- The TC01B is equipped with the Lightning interface, compatible with iPhone and iPad. This includes the new iPhone 15 with an Apple adapter. It fully supports iOS with the Apple MFI Certification obtained.
- The TC01A with the Type C interface is for Android and HarmonyOS



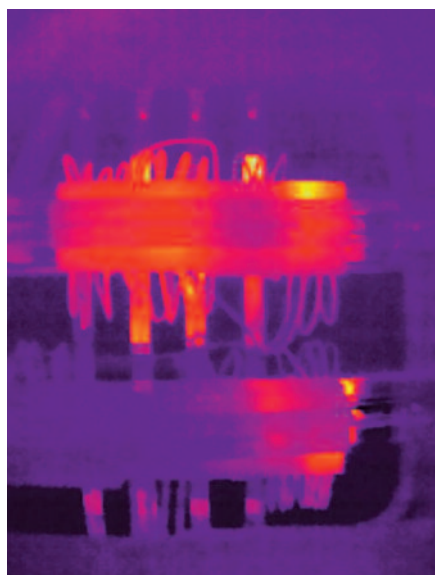
Bring iSee™,

See more...

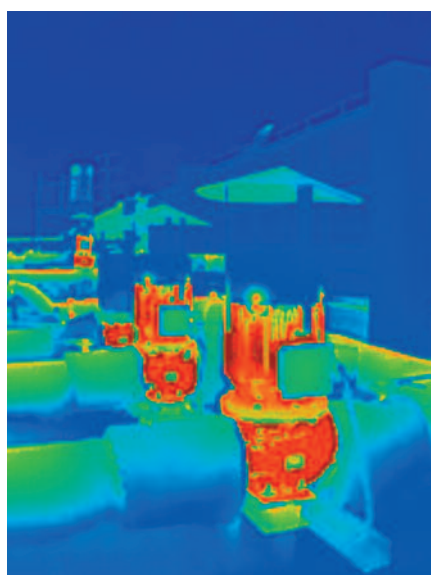
Find more...

- 256 x 192 pixels, detailed image quality
- Up to 550 °C, suitable to use in many applications
- ±2% or ±2 °C accuracy, reliable and stable
- 25 Hz frame rate for smooth video recording

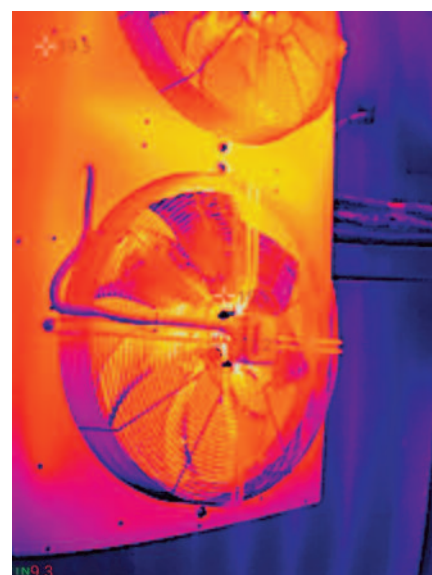
Fluke iSee™ application scenarios



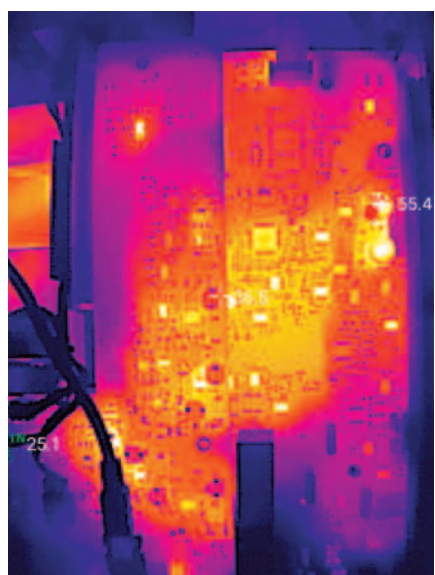
Electrical cabinet



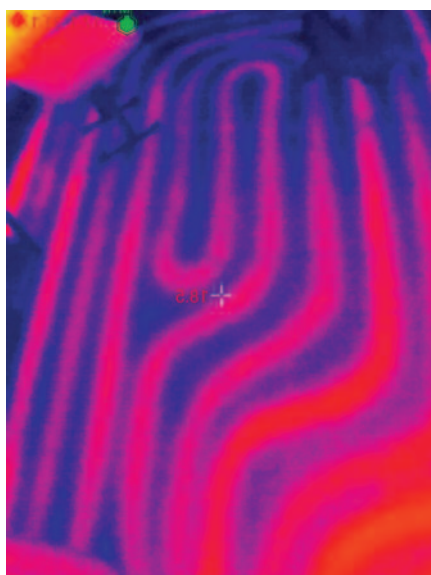
Motor



Fan



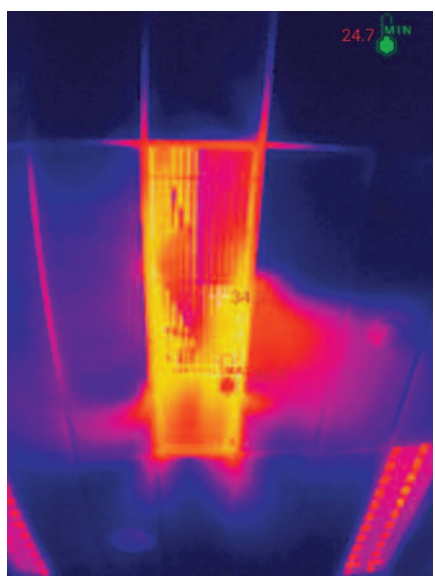
Circuit boards



Floor heating



At outdoor



Air conditioner vent



Heated car seats



Electric switches

Detailed Specifications

	TC01A	TC01B
Performance specifications		
IR resolution	256 x 192	
Pixel size	12 μm	
Temperature range	-10 to 550 $^{\circ}\text{C}$	-20 to 550 $^{\circ}\text{C}$
Temperature accuracy	$\pm 2\%$ of rdg or ± 2 $^{\circ}\text{C}$, whichever is greater (@ 23 $^{\circ}\text{C}$ $\pm 5^{\circ}\text{C}$ ambient temperature)	
Temperature measurement distance	0.25 to 5 m (* -20 $^{\circ}\text{C}$ to 10 $^{\circ}\text{C}$, only for 0.25 to 3 m)	
Frame rate	25 Hz	
Warm-up time	1 minute	
Focal length	Fixed focal length: 3.2 mm	
Shutter mode	Internal	
Thermal sensitivity (NETD)	50 mK	
Spectral range	8 to 14 μm	
Field of view (H x V)	56 $^{\circ}$ x 42 $^{\circ}$	
Spatial resolution	3.81 mrad	
General Specifications		
USB interface	Type-C	Lightning
Operating temperature	0 $^{\circ}\text{C}$ to 40 $^{\circ}\text{C}$	
Storage temperature	-30 $^{\circ}\text{C}$ to 60 $^{\circ}\text{C}$	
Operating humidity	10% to 90% RH, non-condensing	
Power consumption	350 mW (Typical)	200 mW (Typical)
Drop test	1 m	
Ingress protection	IEC 60529: IP54 (with the protective cover for Type C)	IEC 60529: IP56
Operating altitude	2000 m	
Storage altitude	12000 m	
Dimensions (L x W x H)	60 x 33.5 x 11.2 mm	
Weight	22 g	
EMC Environment		
International	IEC 61326-1: Electromagnetic environment for portable equipments CISPR 11: Group 1, Class A	
Group 1: Equipment has intentionally generated and/or uses conductively-coupled radio frequency energy that is necessary for the internal function of the equipment itself.		
Class A: Equipment is suitable for use in all establishments other than domestic and those directly connected to a low-voltage power supply network that supplies buildings used for domestic purposes. There may be potential difficulties in ensuring electromagnetic compatibility in other environments due to conducted and radiated disturbances.		
Caution: This equipment is not intended for use in residential environments and may not provide adequate protection to radio reception in such environments.		
Korea (KCC)	Class A Equipment (Industrial Broadcasting & Communication Equipment)	
Class A: Equipment meets requirements for industrial electromagnetic wave equipment and the seller or user should take notice of it. This equipment is intended for use in business environments and not to be used in homes.		
United States (FCC)	47 CFR 15 Subpart B. This product is considered an exempt device per clause 15.103.	
Warranty	2 years	

Part No.	Description
FLUTC01A	iSee™ Mobile Thermal Camera for Android
FLUTC01B	iSee™ Mobile Thermal Camera for iOS

FLUKE®