





# CONTENTS

**A Series Switches,  
Powerpoints & Covers**



**Slim Series Switches,  
Powerpoints & Covers**



**Electrical Accessories**



**Weatherproof  
Switches, Outlets  
& Isolators**



**Distribution Boards  
& Circuit Protection**



**IP66 Industrial  
Sockets & Outlets**





## A Series Switches, Powerpoints & Covers



**A Series Switches,  
Powerpoints  
& Covers**



**TSESW1**  
Switch Horizontal, 16A,  
Two Way, 1 Gang  
**TSESW1/P**  
Switch Plate Only, No Mechs,  
1 Gang with Cover



**TSESW2**  
Switch Horizontal, 16A,  
Two Way, 2 Gang  
**TSESW2/P**  
Switch Plate Only, No Mechs,  
2 Gang with Cover



**TSESW3**  
Switch Horizontal, 16A,  
Two Way, 3 Gang  
**TSESW3/P**  
Switch Plate Only, No Mechs,  
3 Gang with Cover



**TSESW4**  
Switch Horizontal 16A,  
Two Way, 4 Gang  
**TSESW4/P**  
Switch Plate Only, No Mechs,  
4 Gang with Cover



**TSESW5**  
Switch Horizontal 16A,  
Two Way, 5 Gang  
**TSESW5/P**  
Switch Plate Only, No Mechs,  
5 Gang with Cover



**TSESW6**  
Switch Horizontal 16A,  
Two Way, 6 Gang  
**TSESW6/P**  
Switch Plate Only, No Mechs,  
6 Gang with Cover



**TSEGPO1**  
Powerpoint Single, 10A  
**TSEGPO1/15**  
Powerpoint Single, 15A



**TSEGPO1X**  
Powerpoint Single, 10A  
With Extra 16A Switch



**TSEGPO2**  
Powerpoint Double, 10A  
**TSEGPO2/15**  
Powerpoint Double, 15A



**TSEGPO2X**  
Powerpoint Double, 10A  
With Extra 16A Switch



**TSEGPO2/DP**  
Powerpoint Double, 10A  
Double Pole



**TSUSB2GPO2**  
Powerpoint Double, 10A  
With Twin USB, 3.5A Combined



**A Series Switches,  
Powerpoints  
& Covers**



**TSESW1/V**  
Switch, 16A, Two Way  
1 Gang, Vertical



**TSESW2/V**  
Switch, 16A, Two Way  
2 Gang, Vertical



**TSESW3/V**  
Switch, 16A, Two Way  
3 Gang, Vertical



**TSESW4/V**  
Switch, 16A, Two Way  
4 Gang, Vertical



**TSESW5/V**  
Switch, 16A, Two Way  
5 Gang, Vertical



**TSESW6/V**  
Switch, 16A, Two Way  
6 Gang, Vertical



**TSEGPO1/V**  
Powerpoint Single, 10A  
Vertical



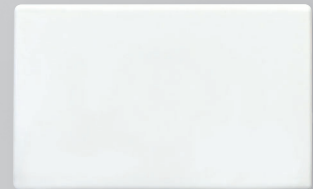
**TSEGPO2/V**  
Powerpoint Double, 10A  
Vertical



**TSESW1/A, TSESW2/A**  
Switch, Architrave, Single  
& Double, 16A



**TSEGPO4**  
Powerpoint, Four Gang, 10A



**TSESO**  
Blank Plate



**TSEPCA**  
Paint Cover, Suits A Series

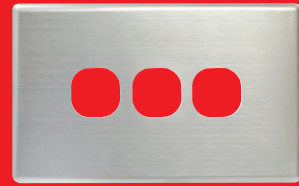


**TSBNP1**  
Wall Plate, Bull Nose, White

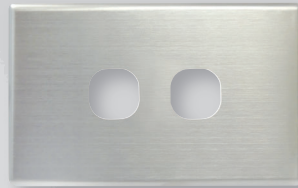


**TSBNP1/R**  
Wall Plate, Bull Nose, White,  
Reversed

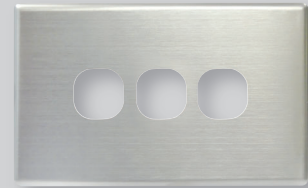
# A Series Switches, Powerpoints & Covers



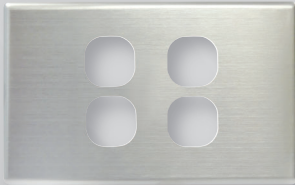
**TSESW1/SC**  
Switch Cover Plate, 1 Gang  
Stainless Steel



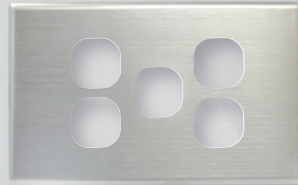
**TSESW2/SC**  
Switch Cover Plate, 2 Gang  
Stainless Steel



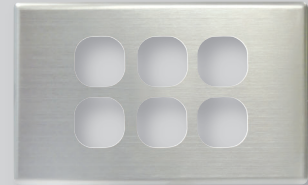
**TSESW3/SC**  
Switch Cover Plate, 3 Gang  
Stainless Steel



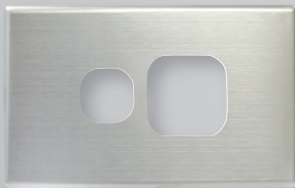
**TSESW4/SC**  
Switch Cover Plate, 4 Gang  
Stainless Steel



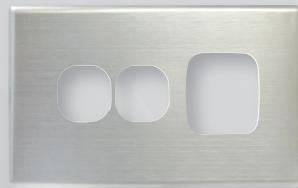
**TSESW5/SC**  
Switch Cover Plate, 5 Gang  
Stainless Steel



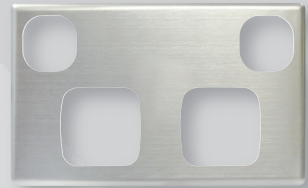
**TSESW6/SC**  
Switch Cover Plate, 6 Gang  
Stainless Steel



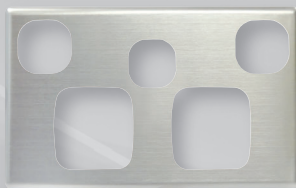
**TSEGPO1/SC**  
Powerpoint Cover Plate,  
Single, Stainless Steel



**TSEGPO1X/SC**  
Powerpoint Cover Plate, Single,  
With Extra Switch, Stainless Steel



**TSEGPO2/SC**  
Powerpoint Cover Plate,  
Double, Stainless Steel



**TSEGPO2X/SC**  
Powerpoint Cover Plate, Double,  
With Extra Switch, Stainless Steel





## Slim Series Switches, Powerpoints & Covers

**Slim Series  
Switches,  
Powerpoints**



**TSESW1S**  
Switch Slim, Horizontal,  
1 Gang, 16A, Two Way

**TSESW1S/P**  
Switch Slim, Plate Only, No  
Mechs, 1 Gang with Cover



**TSESW2S**  
Switch Slim, Horizontal,  
2 Gang, 16A, Two Way

**TSESW2S/P**  
Switch Slim, Plate Only, No  
Mechs, 2 Gang with Cover



**TSESW3S**  
Switch Slim, Horizontal,  
3 Gang, 16A, Two Way

**TSESW3S/P**  
Switch Slim, Plate Only, No  
Mechs, 3 Gang with Cover



**TSESW4S**  
Switch Slim, Horizontal,  
4 Gang, 16A, Two Way

**TSESW4S/P**  
Switch Slim, Plate Only, No  
Mechs, 4 Gang with Cover



**TSESW5S**  
Switch Slim, Horizontal,  
5 Gang, 16A, Two Way

**TSESW5S/P**  
Switch Slim, Plate Only, No  
Mechs, 5 Gang with Cover



**TSESW6S**  
Switch Slim, Horizontal,  
6 Gang, 16A, Two Way

**TSESW6S/P**  
Switch Slim, Plate Only, No  
Mechs, 6 Gang with Cover



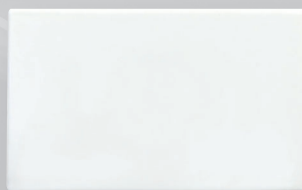
**TSEGPO1S**  
Powerpoint Slim, Single, 10A



**TSEGPO2S**  
Powerpoint Slim, Double, 10A



**TSEGPO2XS**  
Powerpoint Slim, Double,  
10A with Extra 16A Switch



**TSESOS**  
Blank Plate, Slim Series



**TSEPCS**  
Paint Cover, Suits Slim Series





**Slim Series  
Switches,  
Powerpoints**



**TSESW1S/V**  
Switch Slim, Vertical,  
1 Gang, 16A, Two Way



**TSESW2S/V**  
Switch Slim, Vertical,  
2 Gang, 16A, Two Way



**TSESW3S/V**  
Switch Slim, Vertical,  
3 Gang, 16A, Two Way



**TSESW4S/V**  
Switch Slim, Vertical,  
4 Gang, 16A, Two Way

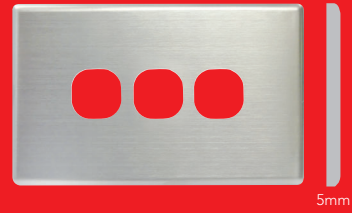


**TSESW5S/V**  
Switch Slim, Vertical,  
5 Gang, 16A, Two Way

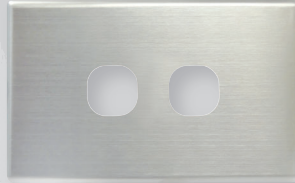


**TSESW6S/V**  
Switch Slim, Vertical,  
6 Gang, 16A, Two Way

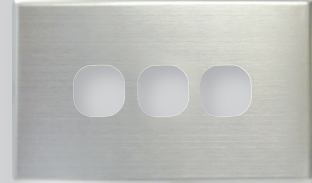
# Slim Series Covers



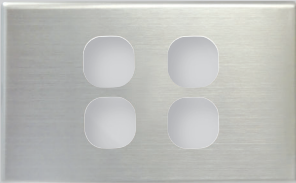
**TSESW1S/SC**  
Switch Cover Plate, 1 Gang,  
Stainless Steel, Suits Slim Series  
**TSESW1S/BSC** Brushed Steel



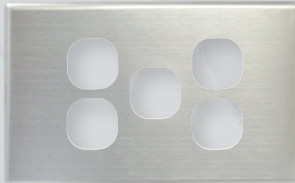
**TSESW2S/SC**  
Switch Cover Plate, 2 Gang,  
Stainless Steel, Suits Slim Series  
**TSESW2S/BSC** Brushed Steel



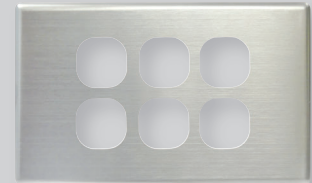
**TSESW3S/SC**  
Switch Cover Plate, 3 Gang,  
Stainless Steel, Suits Slim Series  
**TSESW3S/BSC** Brushed Steel



**TSESW4S/SC**  
Switch Cover Plate, 4 Gang,  
Stainless Steel, Suits Slim Series  
**TSESW4S/BSC** Brushed Steel



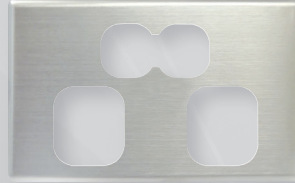
**TSESW5S/SC**  
Switch Cover Plate, 5 Gang,  
Stainless Steel, Suits Slim Series  
**TSESW5S/BSC** Brushed Steel



**TSESW6S/SC**  
Switch Cover Plate, 6 Gang,  
Stainless Steel, Suits Slim Series  
**TSESW6S/BSC** Brushed Steel



**TSEGPO1S/SC**  
Powerpoint Cover Plate, Single,  
Stainless Steel, Suits Slim Series  
**TSEGPO1S/BSC** Brushed Steel

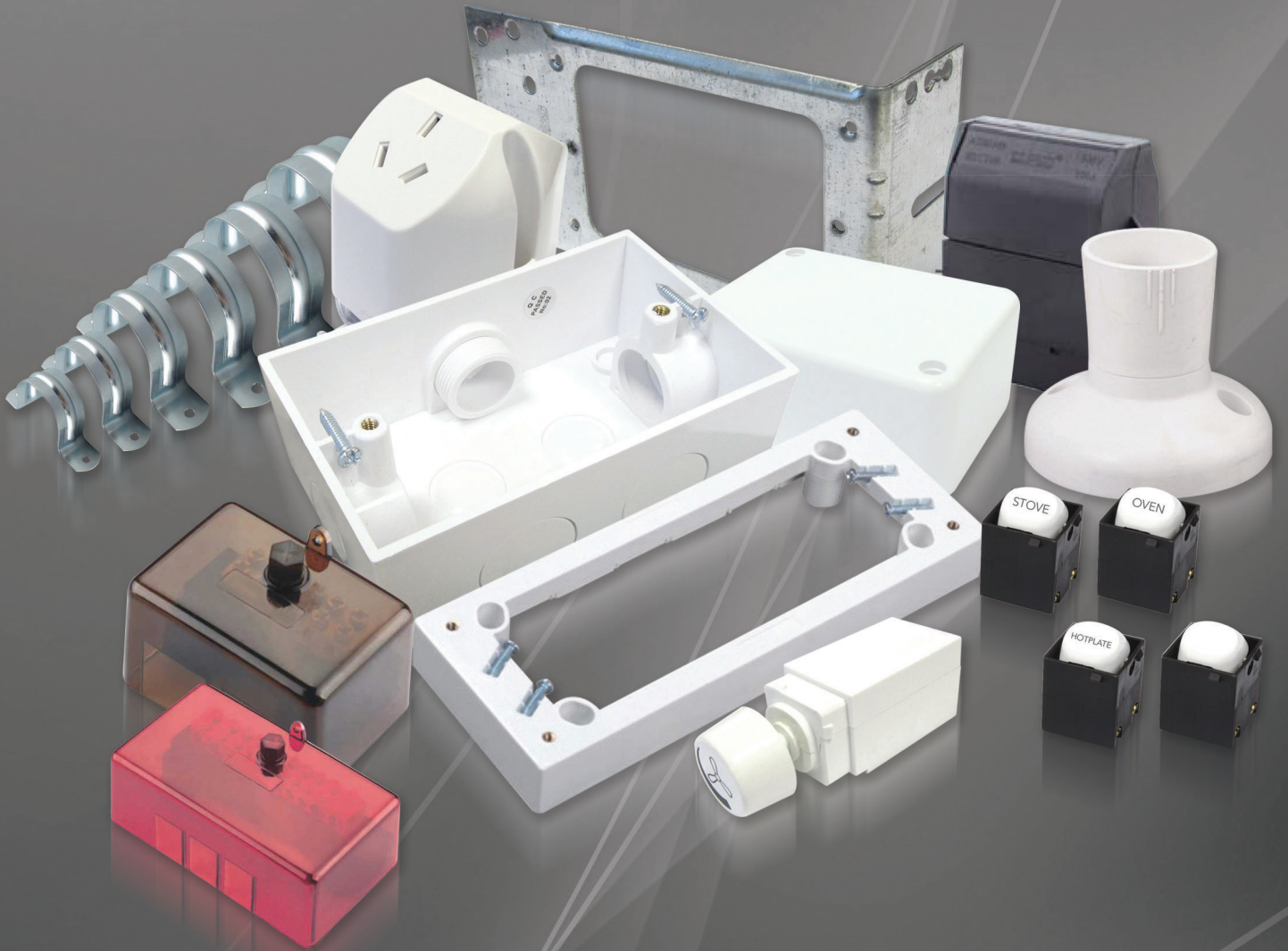


**TSEGPO2S/SC**  
Powerpoint Cover Plate, Double,  
Stainless Steel, Suits Slim Series  
**TSEGPO2S/BSC** Brushed Steel



**TSEGPO2XS/SC**  
Powerpoint Cover Plate, Double  
with Extra Switch, Stainless Steel,  
Suits Slim Series  
**TSEGPO2XS/BSC** Brushed Steel





# Electrical Accessories

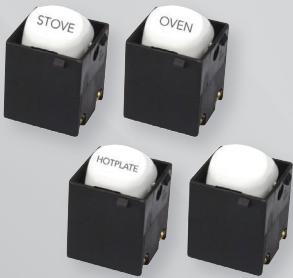
**Electrical  
Accessories**



**TSESM1**  
Mechanism, 16A, Two Way  
**TSESM1/I**  
Mechanism, 10A,  
Intermediate  
**TSESM1PRESS**  
Mechanism, 10A, Momentary  
Labelled: PRESS



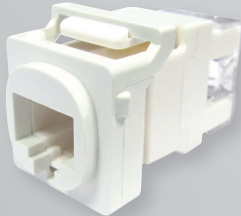
**TSESM1XXX**  
Mechanism, 16A, Two Way  
**TSESM1FAN**  
**TSESM1HEAT**  
**TSESM1LIGHT**



**TSESM1/DP/35AXXX**  
Mechanism, 35A, Double  
Pole  
**TSESM1/DP/35A**  
**TSESM1/DP/35AH/PLATE**  
**TSESM1/DP/35AOVEN**  
**TSESM1/DP/35ASTOVE**



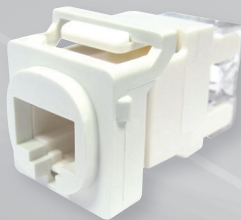
**TSED400W**  
Mechanism, Universal  
Dimmer, Trailer & Leading  
Edge 400W



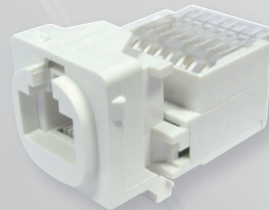
**TSERJ45C6**  
Mechanism, Data Jack,  
RJ45, CAT6, 8 Pin



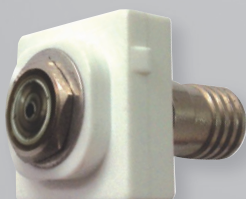
**TSEFDM450W**  
Mechanism, Fan Control, 450W



**TSERJ45**  
Mechanism, Telephone and  
Data Socket



**TSERJ11**  
Mechanism, Telephone  
Socket, 4 Pin



**TSETVC**  
Mechanism, TV Outlet,  
Coax Connection

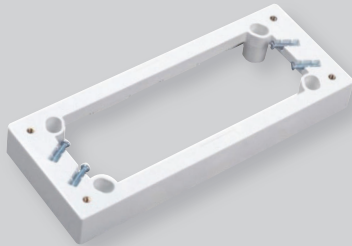
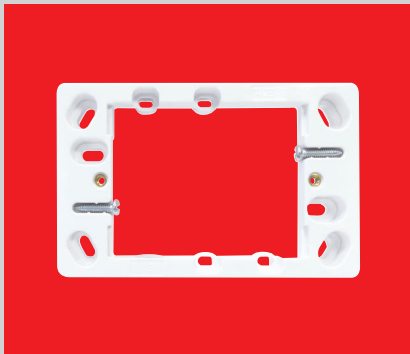


**TSETVF**  
Mechanism, Pay TV  
Connection, F Type

Images may vary from supplied product



**Electrical  
Accessories**



**TSMB25**  
Mounting Block, Quad,  
White, 25mm



**TSMB18**  
Mounting Block, Shallow,  
White, 18mm



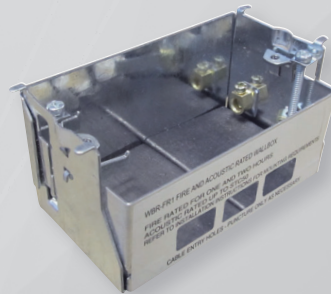
**TSMB34**  
Mounting Block, Deep,  
White, 34mm



**TSMBE**  
Mounting Block, Enclosed,  
Standard



**TSRMB/A**  
Mounting Block, Recess,  
Type A



**TSRMB/FA**  
Mounting Block, Recess  
Fire & Acoustic Rated



**TSBHO**  
Batten Lamp Holder,  
White, Small Base



**TSBHO/F**  
Batten Lamp Holder, White  
with Fastening Plugs & Screws



**TSCR1**  
Ceiling Rose with 4  
Terminals, White

Images may vary from supplied product

# Electrical Accessories



**TSJB1**  
Junction Box Large, 32A,  
With Connectors  
**TSJB2**  
Junction Box Small, 32A,  
With Connectors



**TSJBM**  
Junction Box Mini, 3 Terminals,  
Screw on Cover



**TSPBST1**  
Plug Base Socket, Single,  
Self Terminating



**TSPB1/D**  
Plug Base Socket, Single,  
4 Terminals, Deep Base

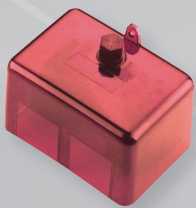


**TSPB2**  
Plug Base Socket, Double,  
4 Terminals



**TSSFSE80**  
Service Fuse, Including  
Cartridge, 80A  
**TSSFSE80FUSE**  
Replacement Service Fuse  
Cartridge, 80A

## Active and Neutral Links 100A/500V



Part No.	Description
TSAL5	Active Link, 5 Hole, Red with Cover
TSAL7	Active Link, 7 Hole, Red with Cover
TSAL10	Active Link, 10 Hole, Red with Cover



Part No.	Description
TSNL5	Neutral Link, 5 Hole, Black with Cover
TSNL7	Neutral Link, 7 Hole, Black with Cover
TSNL10	Neutral Link, 10 Hole, Black with Cover
TSNL12	Neutral Link, 12 Hole, Black with Cover
TSNL14	Neutral Link, 14 Hole, Black with Cover

### Covered Links - Hole Diameters & Cable sizes

Hole	Hole Diameters & Cable sizes
5 Hole	3 x 5.5mm holes (16mm <sup>2</sup> cable max.) 2 x 7.1mm holes (25mm <sup>2</sup> cable max.)
7 Hole	4 x 5.5mm holes (16mm <sup>2</sup> cable max.) 3 x 7.1mm holes (25mm <sup>2</sup> cable max.)
10 Hole	7 x 5.5mm holes (16mm <sup>2</sup> cable max.) 3 x 8.2mm holes (35mm <sup>2</sup> cable max.)
12 Hole	9 x 5.5mm holes (16mm <sup>2</sup> cable max.) 3 x 8.2mm holes (35mm <sup>2</sup> cable max.)
14 Hole	11 x 5.5mm holes (16mm <sup>2</sup> cable max.) 3 x 8.2mm holes (35mm <sup>2</sup> cable max.)

Images may vary from supplied product





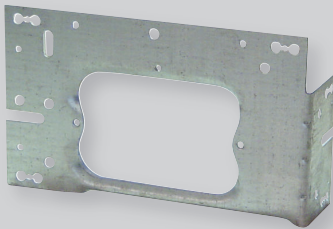
**Electrical Brackets**



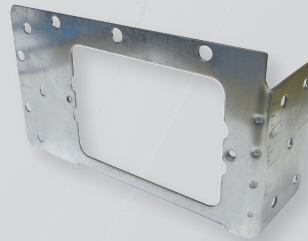
**TSMULC**  
Single Gang Wallboard Clip,  
C Type, (20) Per Box  
**TSMULC-S**  
Wall Board Clip, C Type,  
Suits Slim Style Plates,  
(20) Per Box



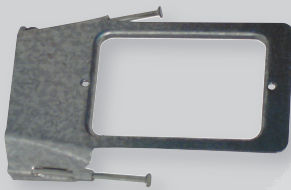
**TSMULH**  
Horizontal Mounting Stud  
Bracket, With Mounting  
Nails, (20) Per Box



**TSMULVH**  
Bracket Stud, Vertical/  
Horizontal Mounting,  
(20) Per Box



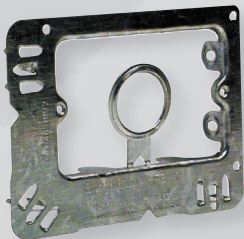
**TSMULVHSM**  
Bracket Stud,  
Vertical/Horizontal Mounting,  
Small, (20) Per Box



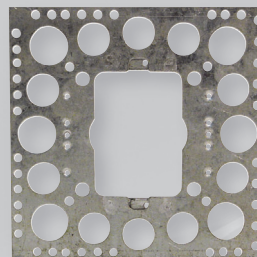
**TSMULNA**  
Bracket Stud, Horizontal,  
Mounting with Nails,  
(20) Per Box



**TSMULVNA**  
Bracket Stud, Vertical Mounting  
with Nails, (20) Per Box



**TSMULSL**  
Bracket Vertical/Horizontal,  
No Nails Needed c/w  
Cable Grip, (20) Per Box



**TSMULP**  
Bracket Mounting, Behind  
Plaster, (20) Per Box  
**TSMULP-S**  
Bracket Mounting, Behind  
Plaster for Slim Style Plates,  
(20) Per Box



**TSMULVHF**  
Horizontal/Vertical Mounting  
Flat Stud Bracket,  
(20) Per Box



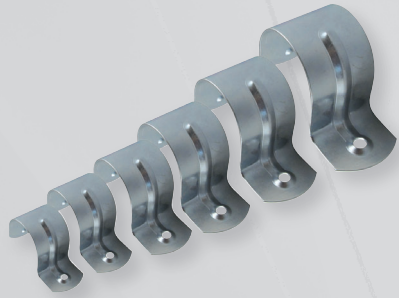
**TSSHR1**  
Insulating Shroud

Images may vary from supplied product

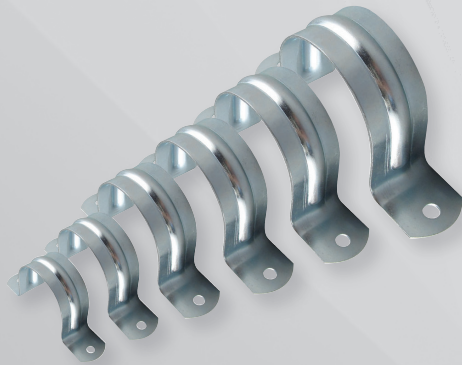
**Electrical  
Accessories**



**Conduit Saddles**



Part No.	Description	Box Qty
TSSH16	Half Conduit Saddle, 16mm	150
TSSH20	Half Conduit Saddle, 20mm	100
TSSH25	Half Conduit Saddle, 25mm	50
TSSH32	Half Conduit Saddle, 32mm	35
TSSH40	Half Conduit Saddle, 40mm	25
TSSH50	Half Conduit Saddle, 50mm	15



Part No.	Description	Box Qty
TSSF16	Full Conduit Saddle, 16mm	150
TSSF20	Full Conduit Saddle, 20mm	100
TSSF25	Full Conduit Saddle, 25mm	50
TSSF32	Full Conduit Saddle, 32mm	35
TSSF40	Full Conduit Saddle, 40mm	25
TSSF50	Full Conduit Saddle, 50mm	15

**Concrete Downlight Can**



**TSCDLC**  
Concrete Downlight Can  
175mm (H), 172mm (Dia), 92mm Opening

**Cable Covers**



Part No.	Description
TSMCC2525S	25 x 25mm, 1.2m (L), Suits up to 20mm Cable/Conduit
TSMCC3232S	32 x 32mm, 1.2m (L), Suits up to 25mm Cable/Conduit
TSMCC3838S	38 x 38mm, 1.2m (L), Suits up to 32mm Cable/Conduit
TSMCC5050S	50 x 50mm, 1.2m (L), Suits up to 40mm Cable/Conduit
TSMCC5555S	55 x 55mm, 1.2m (L), Suits up to 50mm Cable/Conduit
TSMCC7575S	75 x 75mm, 1.2m (L), Suits up to 63mm Cable/Conduit
TSMCC120120S	20 x 120mm, 1.2m (L), Suits up to 100mm Cable/Conduit





# Weatherproof Switches, Outlets & Isolators

**Weatherproof  
Switches, Outlets  
& Isolators**



**TSWPSW1**  
Switch, Single, IP53,  
Weatherproof



**TSWPI120**  
Isolator, 1 Pole, 240V 20A, IP66,  
Weatherproof



**TSWPSW2**  
Switch, Double, IP53,  
Weatherproof



**TSWPI132**  
Isolator, 1 Pole, 240V 32A, IP66,  
Weatherproof



**TSWPGPO1**  
Powerpoint, Single, IP53,  
Weatherproof



**TSWPI332**  
Isolator, 3 Pole, 440V 32A, IP66,  
Weatherproof



**TSWPGPO2**  
Powerpoint, Double, IP53,  
Weatherproof



**TSWPI363**  
Isolator, 3 Pole, 440V 63A, IP66,  
Weatherproof



**TSWPMI120**  
Mini Isolator, 1 Pole, 240V  
20A, IP66, Weatherproof



**TSWPES**  
Weatherproof Box, Suits  
Standard Switch Plates

Images may vary from supplied product





# Distribution Boards & Circuit Protection

# DIN Rail Enclosures & Distribution Boards



**TSDRE1S**  
Surface DIN Rail Enclosure, 1 Pole  
**TSDRE2S**  
Surface DIN Rail Enclosure, 2 Pole



**TSDDB8S**  
Distribution Board, Surface, 8 Pole, Includes Lid & Links  
**TSDDB8F**  
Distribution Board, Flush, 8 Pole, Includes Lid & Links



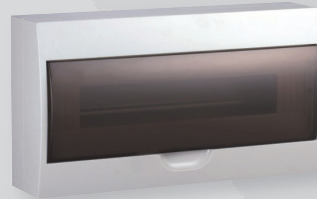
**TSDRE4S**  
Surface DIN Rail Enclosure, 4 Pole  
**TSDRE8S**  
Surface DIN Rail Enclosure, 8 Pole



**TSDDB12S**  
Distribution Board, Surface, 12 Pole, Includes Lid & Links  
**TSDDB12F**  
Distribution Board, Flush, 12 Pole, Includes Lid & Links



**TSDRE12S**  
Surface DIN Rail Enclosure, 12 Pole  
**TSDRE18S**  
Surface DIN Rail Enclosure, 18 Pole



**TSDDB18S**  
Distribution Board, Surface, 18 Pole, Includes Lid & Links  
**TSDDB18F**  
Distribution Board, Flush, 18 Pole, Includes Lid & Links



**TSDDB4S**  
Distribution Board, Surface, 4 Pole, Includes Lid & Links  
**TSDDB4F**  
Distribution Board, Flush, 4 Pole, Includes Lid & Links



**TSDDB24S**  
Distribution Board, Surface, 24 Pole, Includes Lid & Links  
**TSDDB24F**  
Distribution Board, Flush, 24 Pole, Includes Lid & Links



**TSDDB6S**  
Distribution Board, Surface, 6 Pole, Includes Lid & Links  
**TSDDB6F**  
Distribution Board, Flush, 6 Pole, Includes Lid & Links



**TSDDB36S**  
Distribution Board, Surface, 36 Pole, Includes Lid & Links  
**TSDDB36F**  
Distribution Board, Flush, 36 Pole, Includes Lid & Links



**TSPF6**  
6 Pole Fillers



**TSBUS12PT**  
Busbar, 12 Pole, Tongue

Images may vary from supplied product





# Circuit Protection

## Main Switches



**TSM51100**  
Main Switch, 1 Pole, DIN Rail Mounted, 100A

**TSM53100**  
Main Switch, 3 Pole, DIN Rail Mounted, 100A

## Miniature Circuit Breakers (MCB)



**TSCB61XX**  
Miniature Circuit Breaker (MCB), 1 Pole, 6KA, DIN Rail Mounted, 10A, 16A, 20A, 25A, 32A, 40A, 50A & 63A  
Example: TSCB6120



**TSCB62XX**  
Miniature Circuit Breaker (MCB), 2 Pole, 6KA, DIN Rail Mounted, 10A, 16A, 20A, 25A, 32A, 40A, 50A & 63A  
Example: TSCB6220



**TSCB63XX**  
Miniature Circuit Breaker (MCB), 3 Pole, 6KA, DIN Rail Mounted, 10A, 16A, 20A, 25A, 32A, 40A, 50A & 63A  
Example: TSCB6320

## Residual Current Devices (RCD)



**TSRCD4XX**  
Miniature RCD, 4 Pole, 40A & 63A, DIN Rail Mounted, Example: TSRCD440



**TSRCD2XX**  
Miniature RCD, 2 Pole, 40A & 63A, DIN Rail Mounted, Example: TSRCD240

## Residual Current Devices with Overload (RCBO)

Meets Energy Safe Victoria additional testing & verification requirements



**TSMR6XX**  
RCBO Residual Current Breaker, 1 Pole, 6KA, DIN Rail Mounted, 10A, 16A, 20A, 25A & 32A  
Example: TSMR610  
• Top or bottom connection

**NEW**



**TSMR45XX**  
RCBO Residual Current Breaker, 1 Pole, 4.5KA, DIN Rail Mounted, 10A, 16A, 20A, 25A & 32A  
Example: TSMR4510  
• Top or bottom connection

Images may vary from supplied product

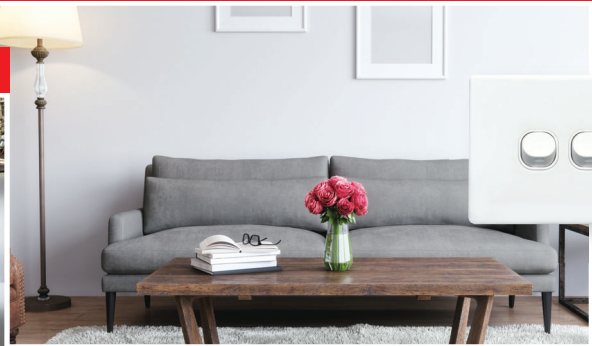
Tradesave  
Domestic &  
Commercial  
Ranges



**TRADESAVE**

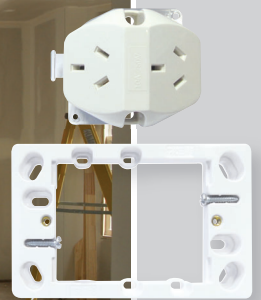
Slim Series Switches, Powerpoints & Covers

A Series Switches, Powerpoints & Covers



Electrical Accessories

Electrical Accessories



Miniature Switchgear, DIN Rail Covers & Distribution Boxes

Weatherproof Switches & Outlets







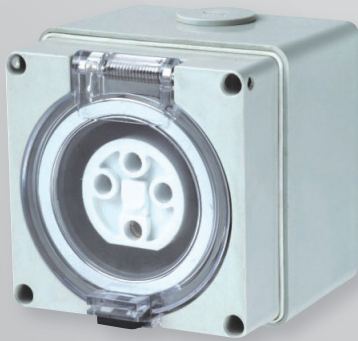
## IP66 Industrial Sockets & Outlets

# IP66 Industrial Sockets & Outlets



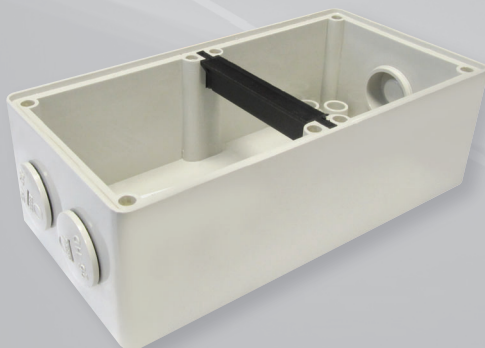
## Switches

Part No.	Description	Current
TSISW210	Switch, 2 Pole	10A
TSISW220	Switch, 2 Pole	20A
TSISW320	Switch, 3 Pole	20A
TSISW332	Switch, 3 Pole	32A
TSISW363	Switch, 3 Pole	63A



## Fixed Sockets

Part No.	Description	Current
TSIFS310	Fixed Socket, 3 Pin, Flat	10A
TSIFS315	Fixed Socket, 3 Pin, Flat	15A
TSIFS320	Fixed Socket, 3 Pin, Round	20A
TSIFS332	Fixed Socket, 3 Pin, Round	32A
TSIFS410	Fixed Socket, 4 Pin, Round	10A
TSIFS420	Fixed Socket, 4 Pin, Round	20A
TSIFS432	Fixed Socket, 4 Pin, Round	32A
TSIFS440	Fixed Socket, 4 Pin, Round	40A
TSIFS450	Fixed Socket, 4 Pin, Round	50A
TSIFS510	Fixed Socket, 5 Pin, Round	10A
TSIFS520	Fixed Socket, 5 Pin, Round	20A
TSIFS532	Fixed Socket, 5 Pin, Round	32A
TSIFS540	Fixed Socket, 5 Pin, Round	40A
TSIFS550	Fixed Socket, 5 Pin, Round	50A



## Mounting Bases & Lids

Part No.	Description
TSIMB1G	Mounting Base, 1 Gang
TSIMB2G	Mounting Base, 2 Gang
TSIMB3G	Mounting Base, 3 Gang
TSIMB4G	Mounting Base, 4 Gang
TSIMB6G	Mounting Base, 6 Gang
TSIMB8G	Mounting Base, 8 Gang
TSIMBL1	Mounting Base Lid, 1 Gang
TSIMBL2	Mounting Base Lid, 2 Gang

Images may vary from supplied product





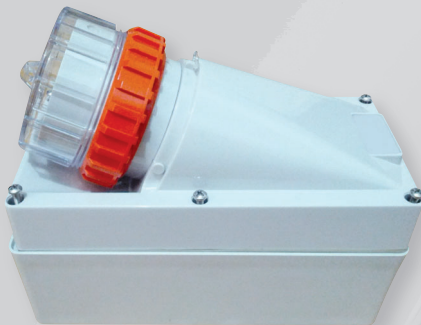
## IP66 Industrial Sockets & Outlets

### Switched Outlets



Part No.	Description	Current
TSISO310	Switched Outlet, 3 Pin, Flat	10A
TSISO315	Switched Outlet, 3 Pin, Flat	15A
TSISO320	Switched Outlet, 3 Pin, Round	20A
TSISO332	Switched Outlet, 3 Pin, Round	32A
TSISO410	Switched Outlet, 4 Pin, Round	10A
TSISO420	Switched Outlet, 4 Pin, Round	20A
TSISO432	Switched Outlet, 4 Pin, Round	32A
TSISO440	Switched Outlet, 4 Pin, Round	40A
TSISO450	Switched Outlet, 4 Pin, Round	50A
TSISO510	Switched Outlet, 5 Pin, Round	10A
TSISO520	Switched Outlet, 5 Pin, Round	20A
TSISO532	Switched Outlet, 5 Pin, Round	32A
TSISO540	Switched Outlet, 5 Pin, Round	40A
TSISO550	Switched Outlet, 5 Pin, Round	50A

### Appliance Inlets



Part No.	Description	Current
TSIAI310	Appliance Inlet, 3 Pin, Flat	10A
TSIAI315	Appliance Inlet, 3 Pin, Flat	15A
TSIAI332	Appliance Inlet, 3 Pin, Round	32A
TSIAI410	Appliance Inlet, 4 Pin, Round	10A
TSIAI420	Appliance Inlet, 4 Pin, Round	20A
TSIAI432	Appliance Inlet, 4 Pin, Round	32A
TSIAI440	Appliance Inlet, 4 Pin, Round	40A
TSIAI450	Appliance Inlet, 4 Pin, Round	50A
TSIAI510	Appliance Inlet, 5 Pin, Round	10A
TSIAI520	Appliance Inlet, 5 Pin, Round	20A
TSIAI532	Appliance Inlet, 5 Pin, Round	32A
TSIAI540	Appliance Inlet, 5 Pin, Round	40A
TSIAI550	Appliance Inlet, 5 Pin, Round	50A

### Circuit Breaker Cover



TSICBC4P  
Circuit Breaker Cover, 4 Pole  
Cover Only, No Base Included

Images may vary from supplied product

**IP66 Industrial  
Sockets & Outlets**



**Extension Plugs - Straight**

Part No.	Description	Current
TSIXPS310	Extension Plug Straight, 3 Pin, Flat	10A
TSIXPS315	Extension Plug Straight, 3 Pin, Flat	15A
TSIXPS320	Extension Plug Straight, 3 Pin, Round	20A
TSIXPS332	Extension Plug Straight, 3 Pin, Round	32A
TSIXPS410	Extension Plug Straight, 4 Pin, Round	10A
TSIXPS420	Extension Plug Straight, 4 Pin, Round	20A
TSIXPS432	Extension Plug Straight, 4 Pin, Round	32A
TSIXPS440	Extension Plug Straight, 4 Pin, Round	40A
TSIXPS450	Extension Plug Straight, 4 Pin, Round	50A
TSIXPS510	Extension Plug Straight, 5 Pin, Round	10A
TSIXPS520	Extension Plug Straight, 5 Pin, Round	20A
TSIXPS532	Extension Plug Straight, 5 Pin, Round	32A
TSIXPS540	Extension Plug Straight, 5 Pin, Round	40A
TSIXPS550	Extension Plug Straight, 5 Pin, Round	50A



**Extension Plugs - Angled**

Part No.	Description	Current
TSIXPA410	Extension Plug Angled, 4 Pin, Round	10A
TSIXPA420	Extension Plug Angled, 4 Pin, Round	20A
TSIXPA432	Extension Plug Angled, 4 Pin, Round	32A
TSIXPA440	Extension Plug Angled, 4 Pin, Round	40A
TSIXPA450	Extension Plug Angled, 4 Pin, Round	50A
TSIXPA510	Extension Plug Angled, 5 Pin, Round	10A
TSIXPA520	Extension Plug Angled, 5 Pin, Round	20A
TSIXPA532	Extension Plug Angled, 5 Pin, Round	32A
TSIXPA540	Extension Plug Angled, 5 Pin, Round	40A
TSIXPA550	Extension Plug Angled, 5 Pin, Round	50A



**Extension Sockets**

Part No.	Description	Current
TSIXS310	Extension Socket, 3 Pin, Flat	10A
TSIXS315	Extension Socket, 3 Pin, Flat	15A
TSIXS332	Extension Socket, 3 Pin, Round	32A
TSIXS410	Extension Socket, 4 Pin, Round	10A
TSIXS420	Extension Socket, 4 Pin, Round	20A
TSIXS432	Extension Socket, 4 Pin, Round	32A
TSIXS440	Extension Socket, 4 Pin, Round	40A
TSIXS450	Extension Socket, 4 Pin, Round	50A
TSIXS510	Extension Socket, 5 Pin, Round	10A
TSIXS520	Extension Socket, 5 Pin, Round	20A
TSIXS532	Extension Socket, 5 Pin, Round	32A
TSIXS540	Extension Socket, 5 Pin, Round	40A
TSIXS550	Extension Socket, 5 Pin, Round	50A

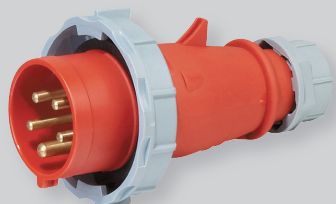
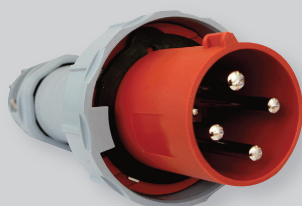
Images may vary from supplied product





## Industrial Switchgear IEC 60309

### Straight Plugs



Part No.	Description	Current
QX278	Straight Plug 230V, 3 Pin, IP67 6H	16A
QX290	Straight Plug 230V, 3 Pin, IP67 6H	32A
QX1571	Straight Plug 230V, 3 Pin, IP67 6H	63A
QX3400	Straight Plug 400V, 3 Pin, IP67 6H	125A
QX282	Straight Plug 400V, 4 Pin, IP67 6H	16A
QX294	Straight Plug 400V, 4 Pin, IP67 6H	32A
QX1110	Straight Plug 400V, 4 Pin, IP67 6H	63A
QX1443	Straight Plug 400V, 4 Pin, IP67 6H	125A
QX2175	Straight Plug 400V, 4 Pin, Reefer Style IP67 3H	32A
QX288	Straight Plug 400V, 5 Pin, IP67 6H	16A
QX300	Straight Plug 400V, 5 Pin, IP67 6H	32A
QX1114	Straight Plug 400V, 5 Pin, IP67 6H	63A
QX1447	Straight Plug 400V, 5 Pin, IP67 6H	125A

### Extension Socket



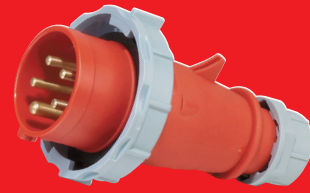
Part No.	Description	Current
QX540	Extension Socket 230V, 2 Pin, IP67 6H	16A
QX552	Extension Socket 230V, 3 Pin, IP67 6H	32A
QX1574	Extension Socket 230V, 3 Pin, IP67 6H	63A
QX3390	Extension Socket 400V, 3 Pin, IP67 6H	125A
QX544	Extension Socket 400V, 4 Pin, IP67 6H	16A
QX556	Extension Socket 400V, 4 Pin, IP67 6H	32A
QX1117	Extension Socket 400V, 4 Pin, IP67 6H	63A
QX1450	Extension Socket 400V, 4 Pin, IP67 6H	125A
QX550	Extension Socket 400V, 5 Pin, IP67 6H	16A
QX562	Extension Socket 400V, 5 Pin, IP67 6H	32A
QX1121	Extension Socket 400V, 5 Pin, IP67 6H	63A
QX1454	Extension Socket 400V, 5 Pin, IP67 6H	125A
QX2177	Extension Socket 400V, 4 Pin, Reefer Style IP67 3H	32A

### Socket Panel Mounted Straight



Part No.	Description	Current
QX218	Socket Panel Mounted Straight 230V, 3 Pin, IP67 6H	16A
QX230	Socket Panel Mounted Straight 230V, 3 Pin, IP67 6H	32A
QX1264	Socket Panel Mounted Straight 230V, 3 Pin, IP67 6H	63A
QX222	Socket Panel Mounted Straight 400V, 4 Pin, IP67 6H	16A
QX234	Socket Panel Mounted Straight 400V, 4 Pin, IP67 6H	32A
QX2123	Socket Panel Mount Straight Reefer, 4 Pin, IP67 3H	32A
QX1124	Socket Panel Mounted Straight 400V, 4 Pin, IP67 6H	63A
QX1457	Socket Panel Mounted Straight 400V, 4 Pin, IP67 6H	125A
QX228	Socket Panel Mounted Straight 400V, 5 Pin, IP67 6H	16A
QX240	Socket Panel Mounted Straight 400V, 5 Pin, IP67 6H	32A
QX1128	Socket Panel Mounted Straight 400V, 5 Pin, IP67 6H	63A
QX1461	Socket Panel Mounted Straight 400V, 5 Pin, IP67 6H	125A

Images may vary from supplied product



## Straight Panel Mounted 45° Angle



Part No.	Description	Current
QX1475	Socket Panel Mounted 45° 230V, 3 Pin, IP67 6H	16A
QX1502	Socket Panel Mounted 45° 230V, 3 Pin, IP67 6H	32A
QX2180	Socket Panel Mounted 45° 230V, 3 Pin, IP67 6H	63A
QX3575	Socket Panel Mounted 45° 230V, 3 Pin, IP67 6H	125A
QX1479	Socket Panel Mounted 45° 400V, 4 Pin, IP67 6H	16A
QX1506	Socket Panel Mounted 45° 400V, 4 Pin, IP67 6H	32A
QX205	Socket Panel Mounted 45° 400V, 4 Pin, IP67 6H	63A
QX212	Socket Panel Mounted 45° 400V, 4 Pin, IP67 6H	125A
QX1485	Socket Panel Mounted 45° 400V, 5 Pin, IP67 6H	16A
QX1551	Socket Panel Mounted 45° 400V, 5 Pin, IP67 6H	32A
QX209	Socket Panel Mounted 45° 400V, 5 Pin, IP67 6H	63A
QX216	Socket Panel Mounted 45° 400V, 5 Pin, IP67 6H	125A

## Appliance Inlet Panel Mount Straight



Part No.	Description	Current
QX826	App Inlet Panel Mount Straight, 230V, 3 Pin, IP67 6H	16A
QX831	App Inlet Panel Mount Straight, 230V, 3 Pin, IP67 6H	32A
QX836	App Inlet Panel Mount Straight, 230V, 3 Pin, IP67 6H	63A
QX3665	App Inlet Panel Mount Straight, 230V, 3 Pin, IP67 6H	125A
QX827	App Inlet Panel Mount Straight, 400V, 4 Pin, IP67 6H	16A
QX832	App Inlet Panel Mount Straight, 400V, 4 Pin, IP67 6H	32A
QX3656	App Inlet Panel Mount Straight, 400V, 4 Pin, IP67 6H	63A
QX3583	App Inlet Panel Mount Straight, 400V, 4 Pin, IP67 6H	125A
QX829	App Inlet Panel Mount Straight, 400V, 5 Pin, IP67 6H	16A
QX834	App Inlet Panel Mount Straight, 400V, 5 Pin, IP67 6H	32A
QX3658	App Inlet Panel Mount Straight, 400V, 5 Pin, IP67 6H	63A
QX1983	App Inlet Panel Mount Straight, 400V, 5 Pin, IP67 6H	125A

## Appliance Inlet Surface Mount



Part No.	Description	Current
QX1003	Appliance Inlet Surface Mount, 230V, 3 Pin, IP67 6H	16A
QX1006	Appliance Inlet Surface Mount, 230V, 3 Pin, IP67 6H	32A
QX1107	Appliance Inlet Surface Mount, 230V, 3 Pin, IP67 6H	63A
QX1004	Appliance Inlet Surface Mount, 400V, 4 Pin, IP67 6H	16A
QX1007	Appliance Inlet Surface Mount, 400V, 4 Pin, IP67 6H	32A
QX357	Appliance Inlet Surface Mount, 400V, 4 Pin, IP67 6H	63A
QX1005	Appliance Inlet Surface Mount, 400V, 5 Pin, IP67 6H	16A
QX1008	Appliance Inlet Surface Mount, 400V, 5 Pin, IP67 6H	32A
QX361	Appliance Inlet Surface Mount, 400V, 5 Pin, IP67 6H	63A

Images may vary from supplied product





## Industrial Switchgear IEC 60309

### Fixed Socket Surface Mount



Part No.	Description	Current
QX1192	Fixed Socket Surface Mount 230V, 3 Pin, IP67 6H	16A
QX1196	Fixed Socket Surface Mount 400V, 4 Pin, IP67 6H	16A
QX1200	Fixed Socket Surface Mount 400V, 5 Pin, IP67 6H	16A
QX1202	Fixed Socket Surface Mount 230V, 3 Pin, IP67 6H	32A
QX1206	Fixed Socket Surface Mount 400V, 4 Pin, IP67 6H	32A
QX1210	Fixed Socket Surface Mount 400V, 5 Pin, IP67 6H	32A
QX128	Fixed Socket Surface Mount 230V, 3 Pin, IP67 6H	63A
QX132	Fixed Socket Surface Mount 400V, 4 Pin, IP67 6H	63A
QX136	Fixed Socket Surface Mount 400V, 5 Pin, IP67 6H	63A
QX2123	Reefer Container Socket 400V, 4 Pin, IP67 3H	32A

### Interlocked Switched Socket Outlet



Part No.	Description	Current
QX7012	Interlocked Switch Socket 230V, 3 Pin, IP67 6H	16A
QX5600	Interlocked Switch Socket 400V, 4 Pin, IP67 6H	16A
QX5603	Interlocked Switch Socket 400V, 5 Pin, IP67 6H	16A
QX5793	Interlocked Switch Socket 230V, 3 Pin, IP67 6H	32A
QX5605	Interlocked Switch Socket 400V, 4 Pin, IP67 6H	32A
QX5608	Interlocked Switch Socket 400V, 5 Pin, IP67 6H	32A
QX5911	Interlocked Switch Socket 230V, 3 Pin, IP67 6H	63A
QX5110	Interlocked Switch Socket 400V, 4 Pin, IP67 6H	63A
QX5113	Interlocked Switch Socket 400V, 5 Pin, IP67 6H	63A
QX5792	Interlocked Switch Socket 400V, 4 Pin, IP67 3H	32A

Images may vary from supplied product

This manufacturer's warranty is provided by Repelec (Aust) (ACN 003 762 641).

- Tradesave products are guaranteed for a period of 5 (five) years from date of purchase, provided the product has been installed correctly and in accordance with local electrical wiring regulations and codes of practice. This guarantee shall become invalid if this product has been incorrectly installed, misused, tampered with or accidentally damaged.
- If the goods are defective, we undertake to repair or replace the goods or any part of them that is defective; or wholly or partly recompense you if they are defective.
- Our goods come with guarantees that cannot be excluded under the Australian Consumer Law. You are entitled to a replacement or refund for a major failure and for compensation for any other reasonably foreseeable loss or damage. You are entitled to have the goods repaired or replaced if the goods fail to be of acceptable quality and failure does not amount to a major failure.
- If you wish to make a warranty claim, please return this product to the original place of purchase together with your purchase receipt, or contact Repelec (Aust) on 1300 555 586.

Tradesave products are manufactured to the highest standards and delivered to the consumer at an affordable price. Switches and powerpoints are moulded in a bright white, fade resistant, flame retardant polycarbonate. Each product is packaged in brightly coloured cartons and protective bags to prevent scratches during transport.

All Tradesave products meet Australian and New Zealand standards and have appropriate approvals where required.



**Repelec (Aust)**

ABN 13 003 762 641

**Phone: 1300 555 586 Fax: 1300 666 066**

**NEW SOUTH WALES**  
16 Rayben Street,  
Glendenning NSW 2761

**NORTHERN TERRITORY**  
Lot 3919 Hidden Valley Rd,  
Berrimah NT 0820

**QUEENSLAND**  
17 Sudbury Street,  
Darra QLD 4076

**SOUTH AUSTRALIA**  
7 Playford Crescent,  
Salisbury North SA 5108

**TASMANIA**  
51 Glen Dhu Street,  
Launceston TAS 7250

**VICTORIA**  
4 Enterprise Court,  
Mulgrave VIC 3170

**WESTERN AUSTRALIA**  
15 Mordaunt Circuit,  
Canning Vale WA 6155

Images may vary from supplied product



Images may vary from supplied product

