

Fluke VT06 & VT08 Visual IR Thermometer

New Palm-size Device, Light & Clear



Higher resolution, greatly improving temperature measurement efficiency

The 120 x 90 resolution model has more than 10000 infrared pixels, which is 12 times higher than the previous generation* and rich temperature details help you find problems faster.

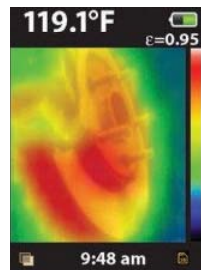


Image from the previous generation product VT04* (28×28 pixel)

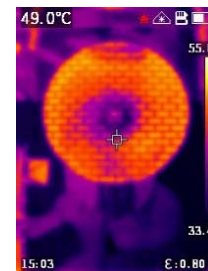


Image from VT08 (120×90 pixel)

Difficult to distinguish between false and real? Infrared and visible blending can help!

VT08 is equipped with both infrared and visible light cameras and blend a visual image with infrared heat map overlay in real-time to distinguish the object. In addition, your customers can quickly adjust the blend degree according to their requirements, or switch to the Picture-in-Picture mode.



Advanced functionality in the size of a spot thermometer

Portability is one of the advantages of VT06 / VT08 thermal Thermometer. It is almost comparable to the point thermometer in terms of weight and size. Great abilities with a small size, you can get a leap in temperature measurement experience from point to area.



Features & Benefits

FLUKE®

Fluke VT06 Visual Thermometer	Fluke VT08 Visual Thermometer
120 x 90 pixel resolution	120 x 90 pixel resolution
Up to 400 °C measurement temp	Up to 400 °C measurement temp
Laser pointer	Visual light camera (PIP mode)
8 hrs battery life	Laser pointer
	5 hrs battery life
	Flashlight



Part No.	Description
FLUVT06	Visual IR Thermometer, -10 to 400°C
FLUVT08	Visual IR Thermometer, PIP, -10 to 400°C

☎ 1300 555 586
 🌐 repelec.com.au

rep **ELEC**
 TRADE SOLUTIONS

📘 📷
 🐦 📺 @RepelecAU